



INDUSTRIAL



COMMERCIAL



NILO

TUBULAR MOTORS FOR
ROLLING SHUTTERS

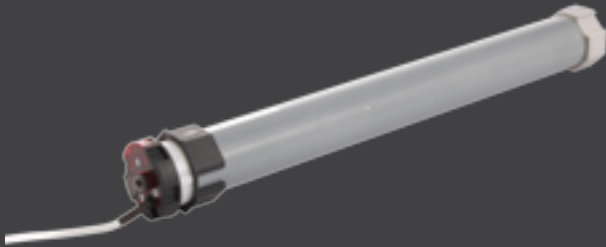
Shutter's tube diameter from
70mm up to maximale 101,6mm

www.erreka-automation.com

We open
the doors for you

NILO

TUBULAR MOTORS FOR ROLLING SHUTTERS



DIAMETER	SHUTTER'S HEIGHT	SHUTTER'S MAX. WEIGHT	SHUTTER'S TUBE DIAMETER	MAXIMUM TORQUE
59mm	* 4m	125Kg	70mm	100Nm
92mm	* 6m	440Kg	101,6mm	300Nm

* Rolling shutters with a maximal slats thickness of 14mm and maximal slats height of 55mm (NICM59100) or 100mm (NICM92300)

Mechanical limit switches

Emergency operation to manually operate the shutter in case of power failure

TECHNICAL DATA

	NICM59100	NICM92300
Power supply (Vac/Hz)	230/50	
Power consumed (W)	460	680
Absorbed current (A)	2	3
Maximum torque (Nm)	100	300
Output speed (rpm)	12	6
Max. shutter's weight* (kg)	125	441
Max. working time (min)	4	
Limit switches turns (n.)	27	16
Length - L - (mm)	640	560
Protection level	IP44	
Motor diameter	59	92



RECOMMENDED ACCESSORIES

Control panel		Transmitter	
WISE01		KU02	

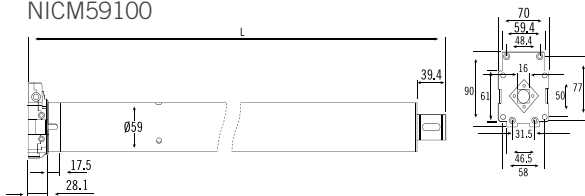
Cuadro	Receiver	Transmitter
CLEVER01	IRRE2-250	IRI02

Crank	
ANIM01	MT

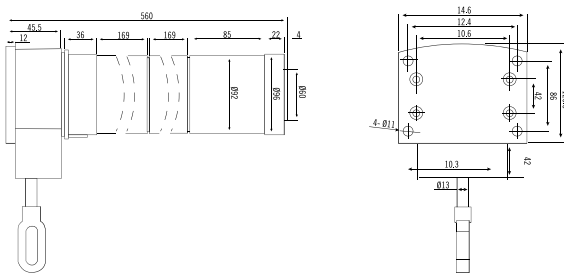
Adapters and supports	
ANI07059	<p>OCT.70 IMBAC</p> <p>Included in model NICM59100</p>

ANIR10092	<p>Included in model NICM92300</p>
-----------	------------------------------------

NICM59100



NICM92300



INSTALLATION LAYOUT

